

Consumer Response Group

6500 W. Cortland Street * Chicago, IL 60707 * Phone: 773-889-8870 * FAX: 773-622-2269

May 1, 2008

Page 1 of 3

TECHNICAL SERVICE BULLETIN

10059

MODEL(S): 200 GTL DX with factory talk-back

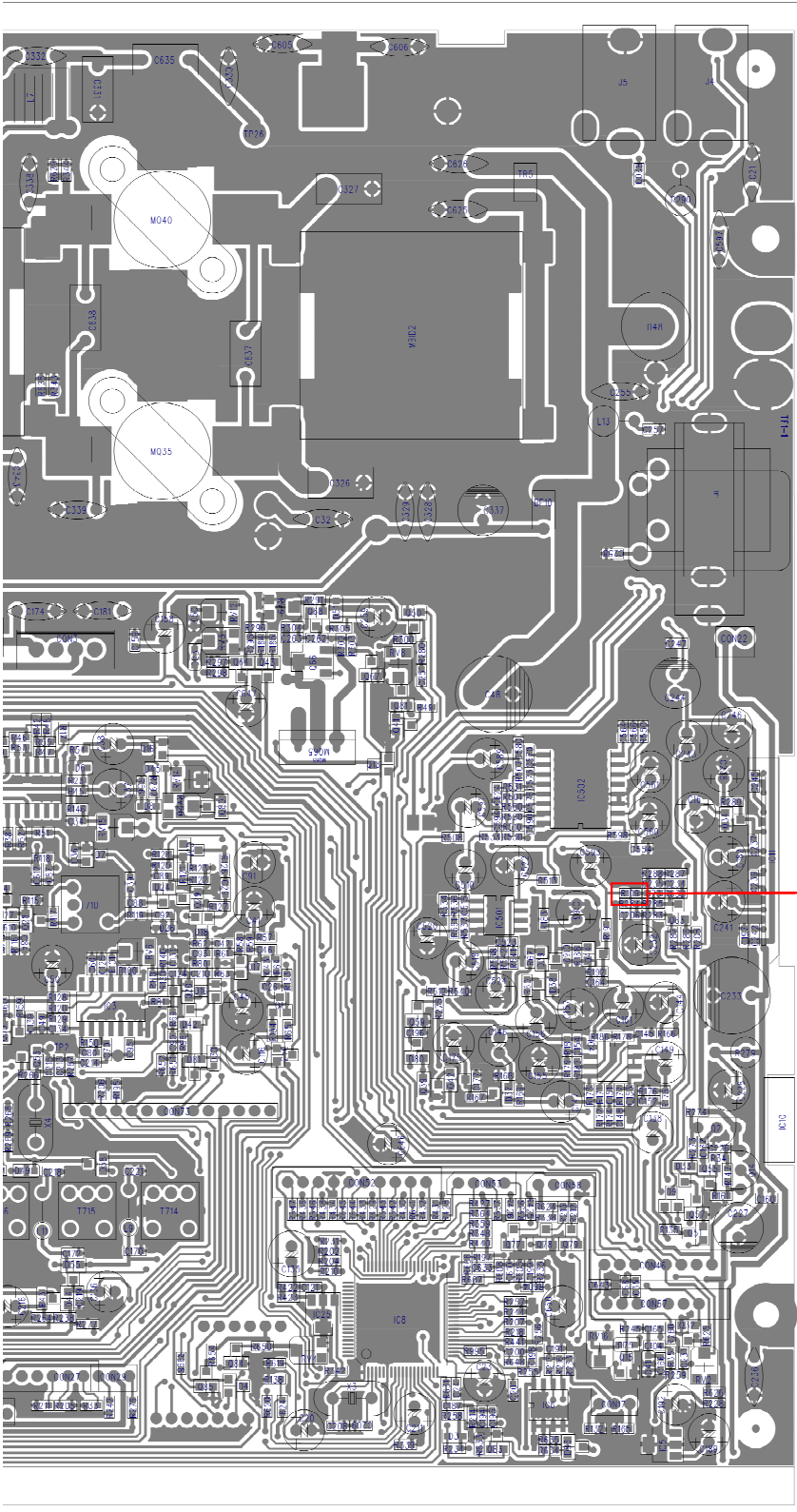
DESCRIPTION: How to adjust the talk-back volume.

ACTION: To change the talk-back volume, adjust R109. The location of R109 is shown on pages 2-3.

To increase the talk-back volume, decrease R109. The factory value is 36K Ω .

ADJUSTMENTS: None

NOTES: If the talk-back volume is turned too high, acoustic feedback can occur which will cause a squealing noise. The solution is to turn down the talk-back volume.



R109

